

Restoration of the Morris-Jumel Mansion

Exterior work to begin in 2024

Funding for this project was provided by former elected officials: Mayor Bill de Blasio, Council Member Ydanis Rodriguez, and Manhattan Borough President Gale A. Brewer, and continues with the support of Mayor Eric L. Adams, Council Member Carmen De La Rosa, and Manhattan Borough President Mark Levine.

CITY OF NEW YORK PARKS & RECREATION

MORRIS-JUMEL MANSION ACCESSIBILITY UPDATES AND RECONSTRUCTION

65 JUMEL TERRACE
NEW YORK, NY 10032

BOROUGH OF MANHATTAN
CONTRACT #: M073-123M

CAPITAL PROJECTS

OLMSTED CENTER
FLUSHING MEADOWS CORONA PARK
FLUSHING, NEW YORK, NY 11368

COMMISSIONER
SUE DONOGHUE

DEPUTY COMMISSIONER, CAPITAL PROJECTS
THERÈSE BRADDICK

HISTORIC HOUSE TRUST
DIRECTOR OF HISTORIC HOUSES
MEREDITH SOREN HORSFORD

ARCHITECTURE AND ENGINEERING
ASSISTANT COMMISSIONER FOR ARCHITECTURE AND
ENGINEERING PROGRAM MANAGEMENT
TERENCE MCCORMICK, PE

CHIEF OF ARCHITECTURE AND ENGINEERING
REBECCA BYRNES, RA

TEAM LEADER FOR ARCHITECTURE
MARLISA WISE, RA

TEAM LEADER FOR ENGINEERING
ALLAIRE O'CONNOR, PE

LANDSCAPE ARCHITECTURE

ASSISTANT COMMISSIONER
VINCENT CIRITO, PLA

CHIEF OF LANDSCAPE ARCHITECTURE
NANCY PRINCE, PLA, FASLA

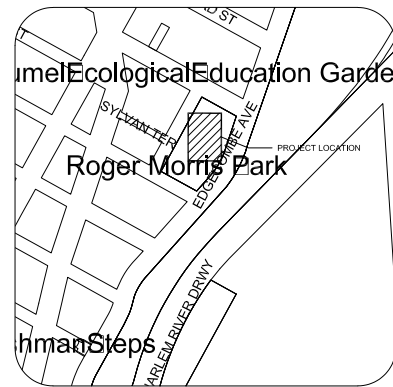
CHIEF OF LANDSCAPE PROGRAM MANAGEMENT
MEREDITH GRIFFIN

CONSULTANTS:

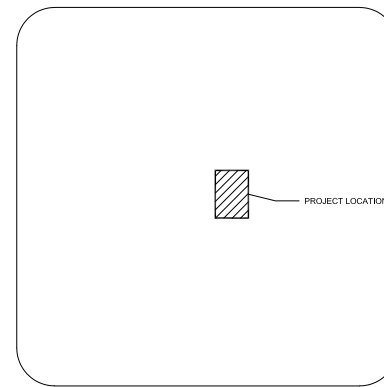
PAGE AYRES COWLEY ARCHITECTURE, LLC
RHODESIDE HARWELL
SIMPSON GUMPERTZ & HEGER
ADS ENGINEERS, DPC
THE TOCCI GROUP, INC



Parks



LOCATION PLAN
NOT TO SCALE

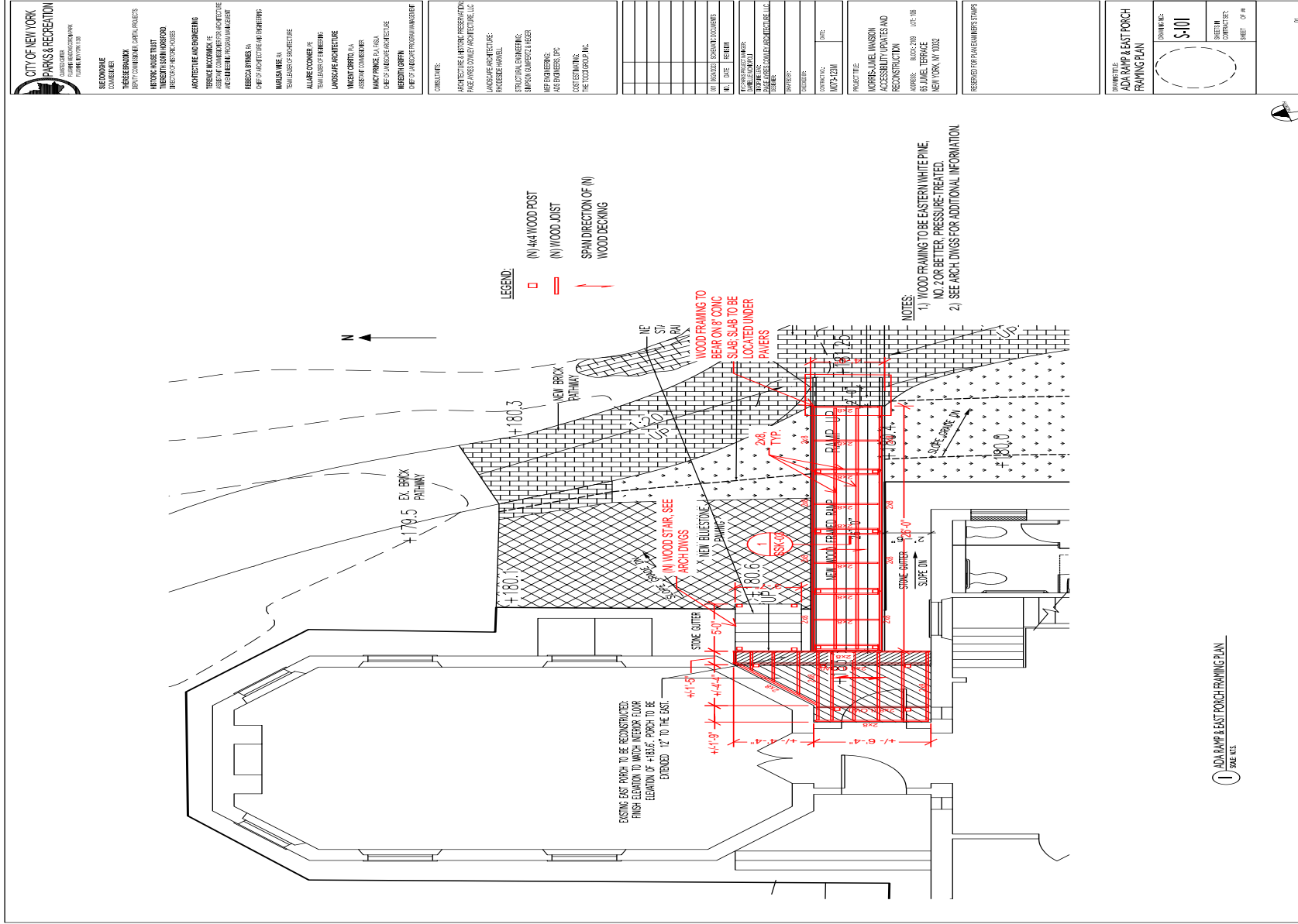


AERIAL PHOTO/ EX. SITE/ STRUCTURE
NOT TO SCALE



M073-123M

Plan for new Accessibility Ramp on east side of Mansion



1 ADA RAMP & EAST PORCH FRAMING PLAN
SHEETS

CITY OF NEW YORK
PARKS & RECREATION
DESIGNER: MORRIS JUNE MANSION
PROJECT MANAGER: FRANK M. COVATTA

SE: DOMINIQUE
COMMENGER

TH: REBECCA PRINCE

DEPT: COMMUNITY CAPITAL PROJECTS

PROJECT: MANSION HOUSE TRUST

THESEEN: THURSDAY, 10/1/2015 10:00 AM

ARCHITECTURE AND ENGINEERING

TERENCE H. BOONICK & ASSOCIATES
P.A.

100 EAST 42ND STREET, SUITE 300
NEW YORK, NY 10017

REBECCA PRINCE, P.A.

100 EAST 42ND STREET, SUITE 300
NEW YORK, NY 10017

MANSION HOUSE TRUST
100 EAST 42ND STREET, SUITE 300
NEW YORK, NY 10017

TERENCE H. BOONICK & ASSOCIATES
P.A.

100 EAST 42ND STREET, SUITE 300
NEW YORK, NY 10017

ALANNE COMBES
100 EAST 42ND STREET, SUITE 300
NEW YORK, NY 10017

LANDSCAPE ARCHITECTURE

VINCENT CERITO, P.A.

100 EAST 42ND STREET, SUITE 300
NEW YORK, NY 10017

ALANNE COMBES
100 EAST 42ND STREET, SUITE 300
NEW YORK, NY 10017

LANDSCAPE ARCHITECTURE

MANLY PRINCE, P.A.

100 EAST 42ND STREET, SUITE 300
NEW YORK, NY 10017

MANLY PRINCE, P.A.

100 EAST 42ND STREET, SUITE 300
NEW YORK, NY 10017

MANLY PRINCE, P.A.

100 EAST 42ND STREET, SUITE 300
NEW YORK, NY 10017

MANLY PRINCE, P.A.

100 EAST 42ND STREET, SUITE 300
NEW YORK, NY 10017

MANLY PRINCE, P.A.

100 EAST 42ND STREET, SUITE 300
NEW YORK, NY 10017

MANLY PRINCE, P.A.

100 EAST 42ND STREET, SUITE 300
NEW YORK, NY 10017

MANLY PRINCE, P.A.

100 EAST 42ND STREET, SUITE 300
NEW YORK, NY 10017

MANLY PRINCE, P.A.

100 EAST 42ND STREET, SUITE 300
NEW YORK, NY 10017

MANLY PRINCE, P.A.

100 EAST 42ND STREET, SUITE 300
NEW YORK, NY 10017

MANLY PRINCE, P.A.

100 EAST 42ND STREET, SUITE 300
NEW YORK, NY 10017

MANLY PRINCE, P.A.

100 EAST 42ND STREET, SUITE 300
NEW YORK, NY 10017

MANLY PRINCE, P.A.

100 EAST 42ND STREET, SUITE 300
NEW YORK, NY 10017

MANLY PRINCE, P.A.

100 EAST 42ND STREET, SUITE 300
NEW YORK, NY 10017

MANLY PRINCE, P.A.

100 EAST 42ND STREET, SUITE 300
NEW YORK, NY 10017

MANLY PRINCE, P.A.

100 EAST 42ND STREET, SUITE 300
NEW YORK, NY 10017

MANLY PRINCE, P.A.

100 EAST 42ND STREET, SUITE 300
NEW YORK, NY 10017

MANLY PRINCE, P.A.

100 EAST 42ND STREET, SUITE 300
NEW YORK, NY 10017

MANLY PRINCE, P.A.

100 EAST 42ND STREET, SUITE 300
NEW YORK, NY 10017

MANLY PRINCE, P.A.

100 EAST 42ND STREET, SUITE 300
NEW YORK, NY 10017

MANLY PRINCE, P.A.

100 EAST 42ND STREET, SUITE 300
NEW YORK, NY 10017

MANLY PRINCE, P.A.

100 EAST 42ND STREET, SUITE 300
NEW YORK, NY 10017

MANLY PRINCE, P.A.

100 EAST 42ND STREET, SUITE 300
NEW YORK, NY 10017

MANLY PRINCE, P.A.

100 EAST 42ND STREET, SUITE 300
NEW YORK, NY 10017

MANLY PRINCE, P.A.

100 EAST 42ND STREET, SUITE 300
NEW YORK, NY 10017

MANLY PRINCE, P.A.

100 EAST 42ND STREET, SUITE 300
NEW YORK, NY 10017

MANLY PRINCE, P.A.

100 EAST 42ND STREET, SUITE 300
NEW YORK, NY 10017

MANLY PRINCE, P.A.

100 EAST 42ND STREET, SUITE 300
NEW YORK, NY 10017

MANLY PRINCE, P.A.

100 EAST 42ND STREET, SUITE 300
NEW YORK, NY 10017

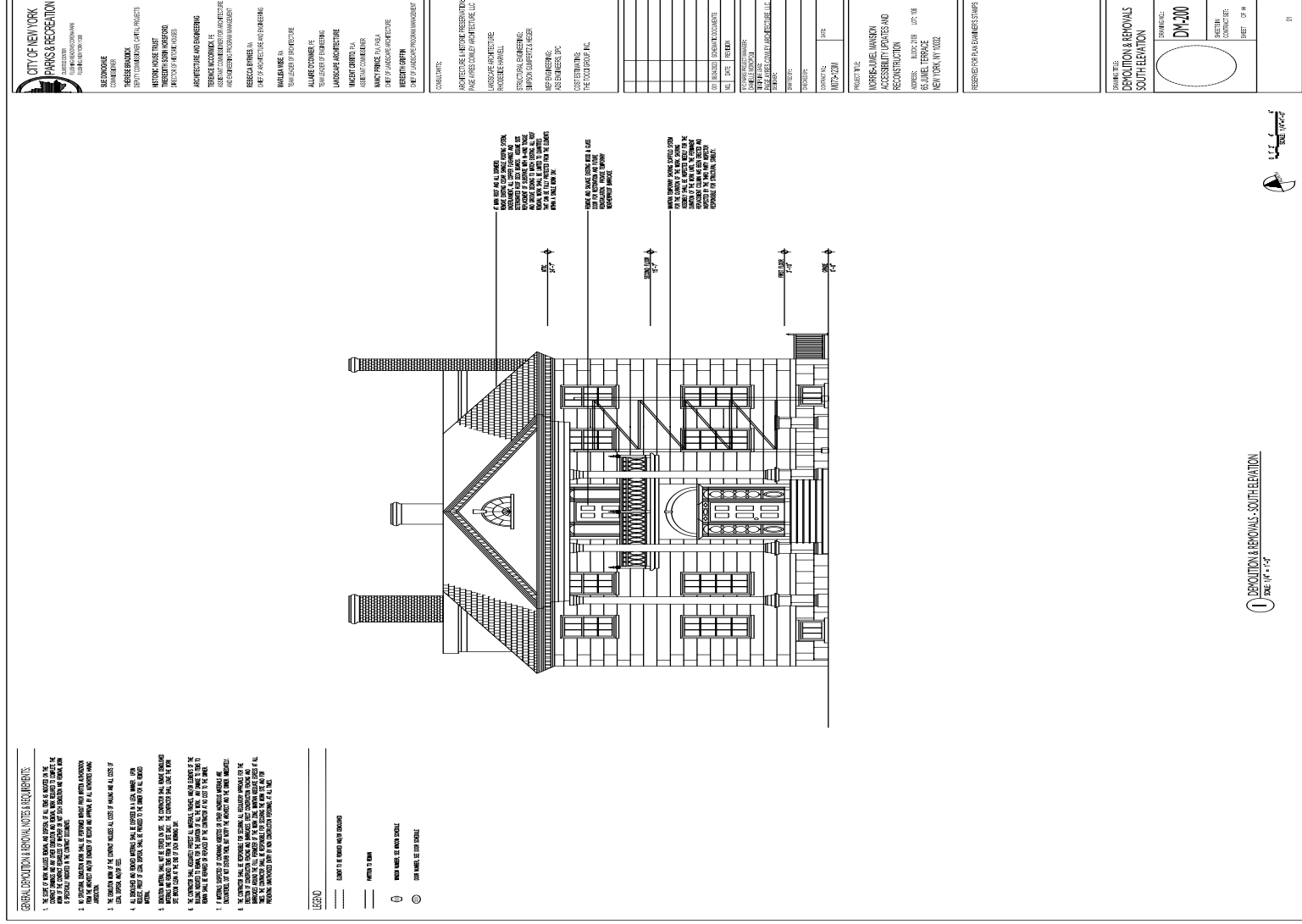
MANLY PRINCE, P.A.

100 EAST 42ND STREET, SUITE 300
NEW YORK, NY 10017

MANLY PRINCE, P.A.

100 EAST 42ND STREET, SUITE 300
NEW YORK, NY 10017

Demolition and Removal plan for front of Mansion



Madame Jumel
with Chase family
members on the
porch c.1860s



Mansion exterior in 1880-1893





Photograph by Bruce Katz